

## REZULTATI ERASMUS+ PROJEKTA

### „HERE Map Makers“



SREDNJA  
ŠKOLA  
IVANEC

Srednja škola Ivanec izradila je digitalnu kartu planinarskih puteva na planinu Ivanščicu:

<https://www.mapillary.com/app/?lat=46.17726953157026&lng=16.108100609695157&z=9.808604570419604>

#### Hiking trails along the north side of Ivanščica mountain

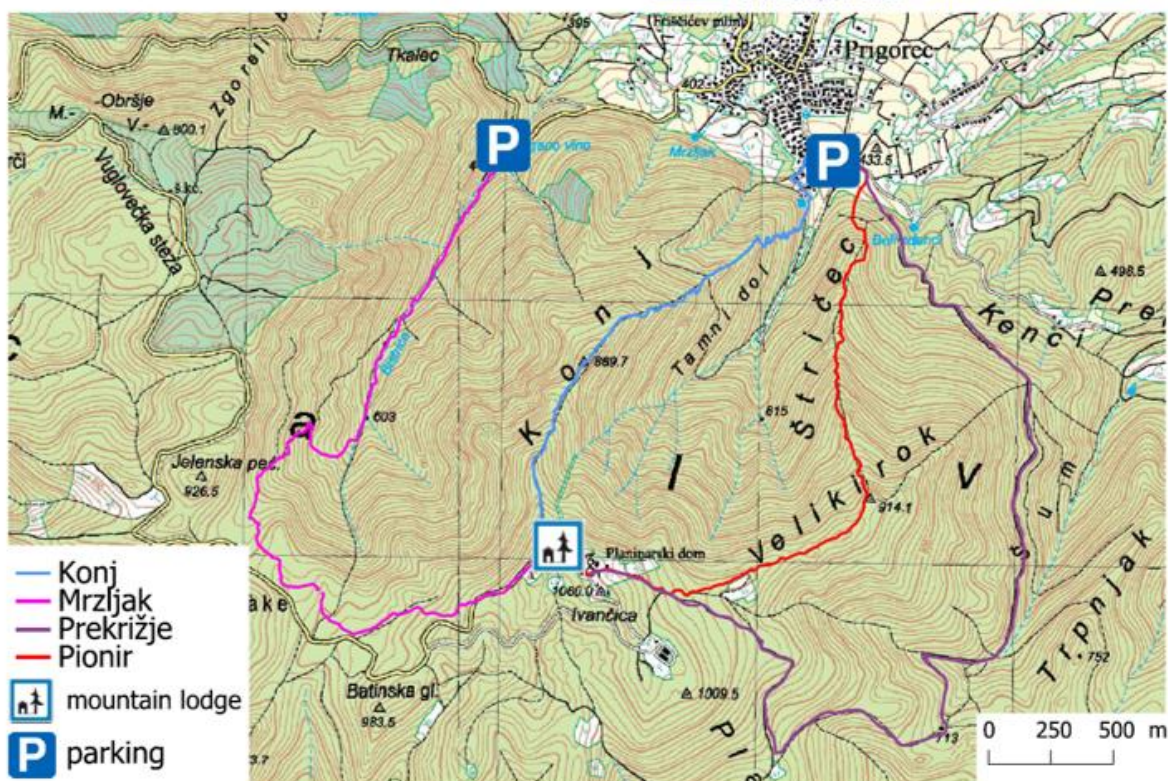
here Map Makers



Co-funded by the  
Erasmus+ Programme  
of the European Union



Erasmus+



This project has been funded with support from the European Commission. This creation reflects the views only of the author, and the Commission cannot be held responsible for any use which may be made of the information contained therein.



SREDNJA  
ŠKOLA  
IVANEC



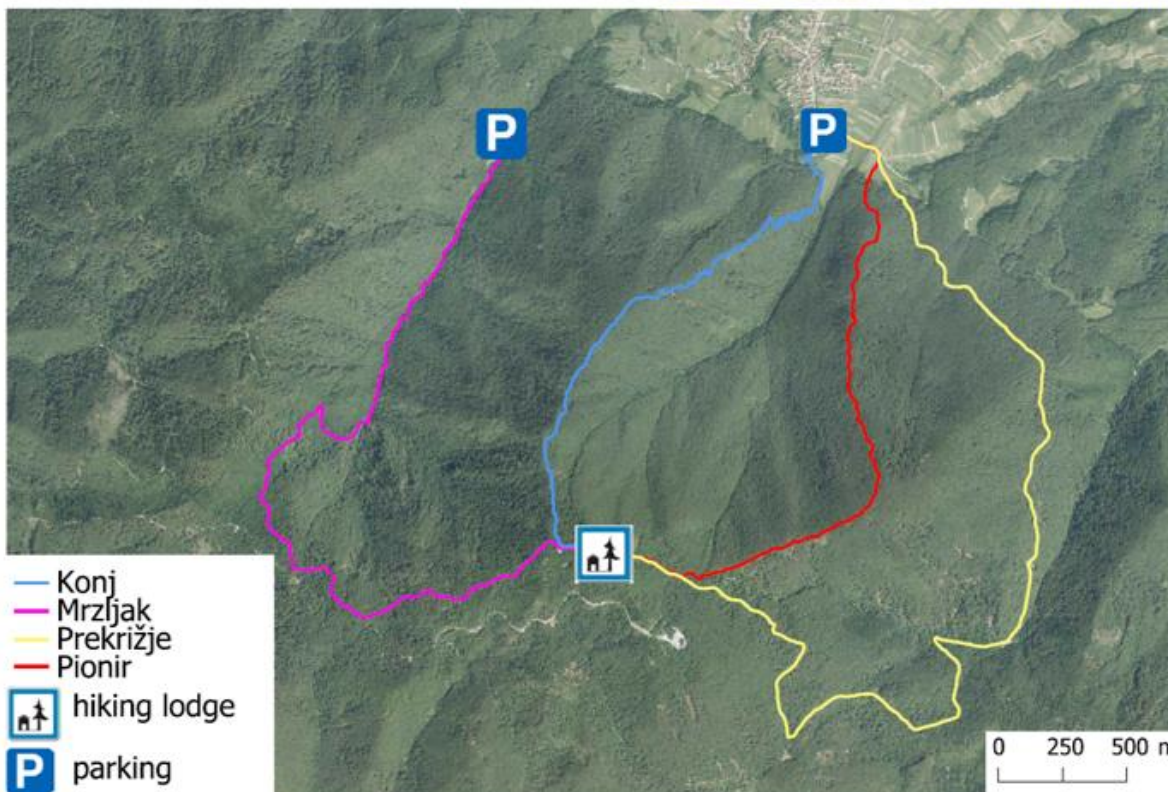
GEODETSKA  
ŠKOLA



SGGOŠ



Hiking trails along the north side of Ivanščica mountain



This project has been funded with support from the European Commission. This creation reflects the views only of the author, and the Commission cannot be held responsible for any use which may be made of the information contained therein.

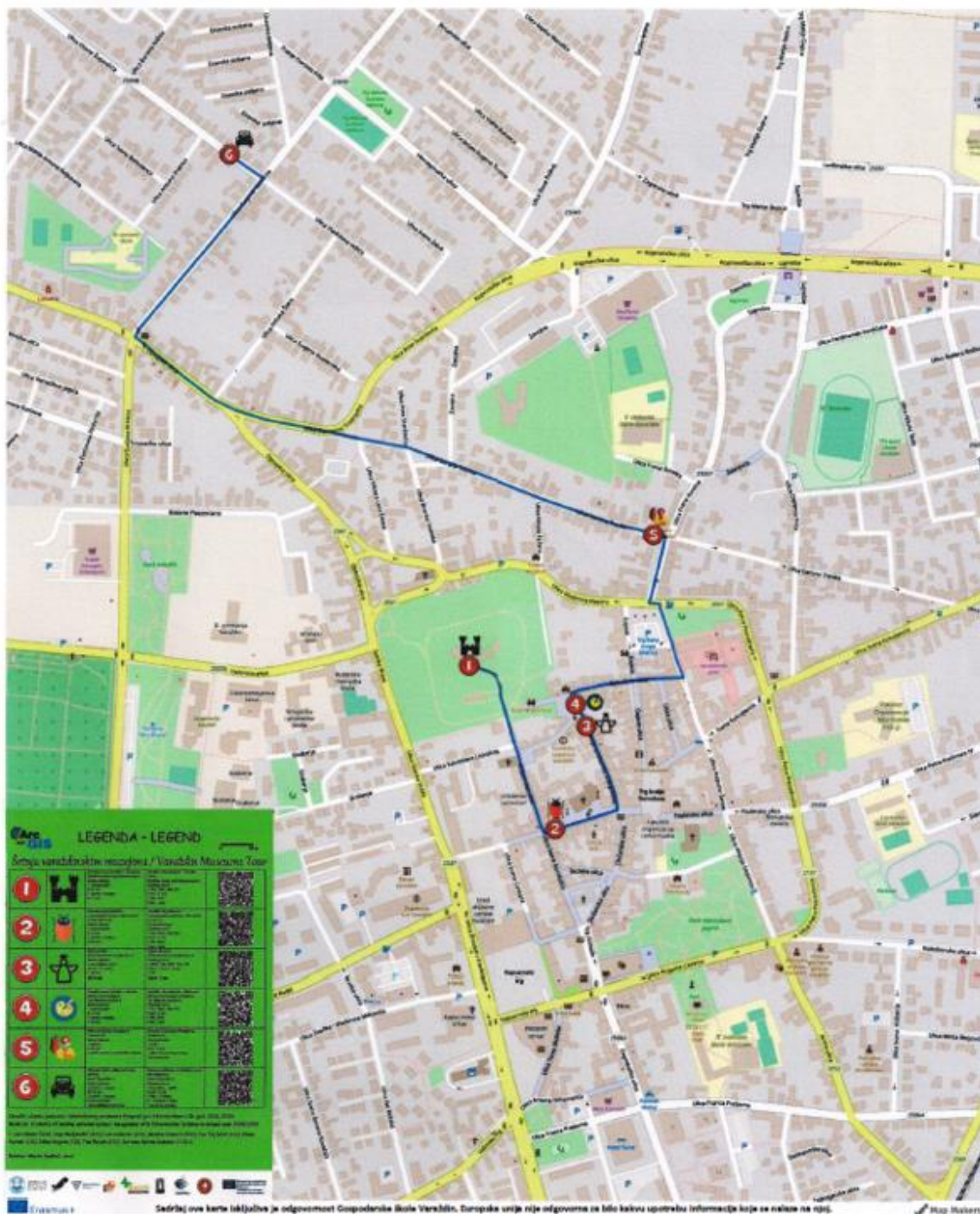




Gospodarska škola Varaždin izradila je digitalnu kartu šetnje varaždinskim muzejima i katu restorana i smještaja u Varaždinu:

<https://mail.google.com/mail/u/1/>

### Varaždin museum tour



<https://arcg.is/1WLKXf>

### Restorani i smještaj u Varaždinu



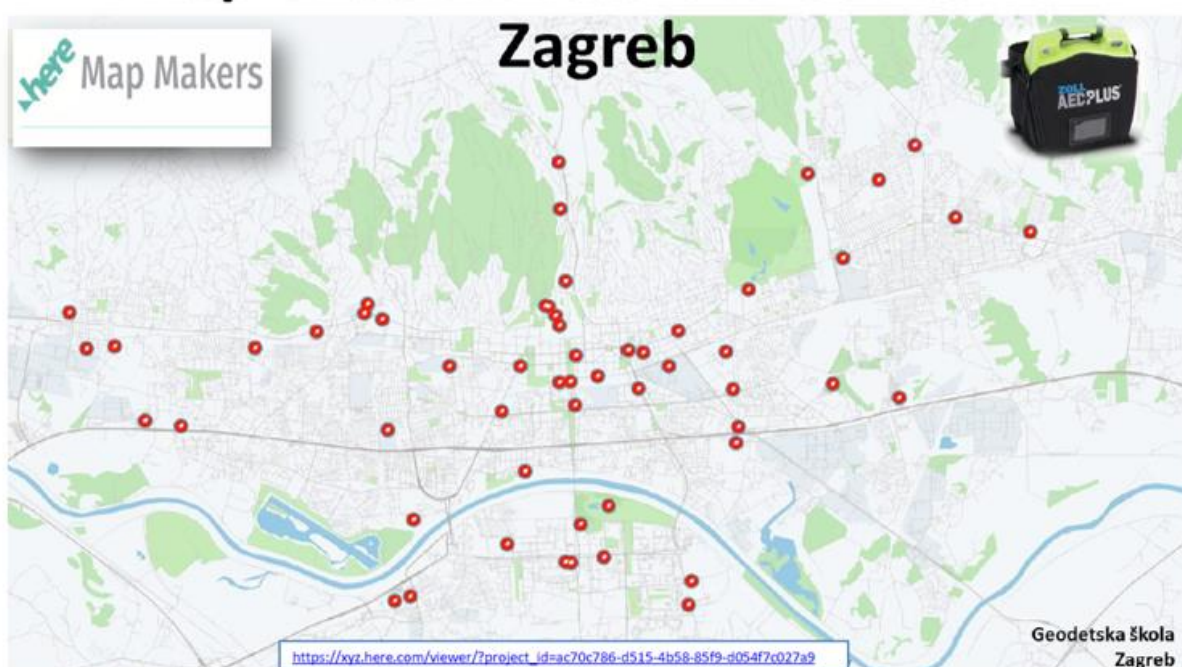


Geodetska škola Zagreb izradila je digitalnu kartu lokacija defibrilatora u Gradu Zagrebu:

<https://xyz.here.com/studio/project/d319e3d7-0d95-4d26-86a0-9983e4c63287?c=45.810022828202335;15.99100740112425&z=13>



## Map of defibrilators in our town



This publication reflects the views only of the author, and the Commission cannot be held responsible for any use which may be made of the information contained therein.



Sufinancirano sredstvima programa Europske unije Erasmus+



ŠKOLA IVANEC



GEODETSKA ŠKOLA Zagreb



Gospodarska škola Varaždin



SGGOŠ



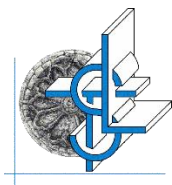
IES Selačica, Tomislav, Španjovska



Škola Arsenjević, Ljudevit, 16. Trstinski

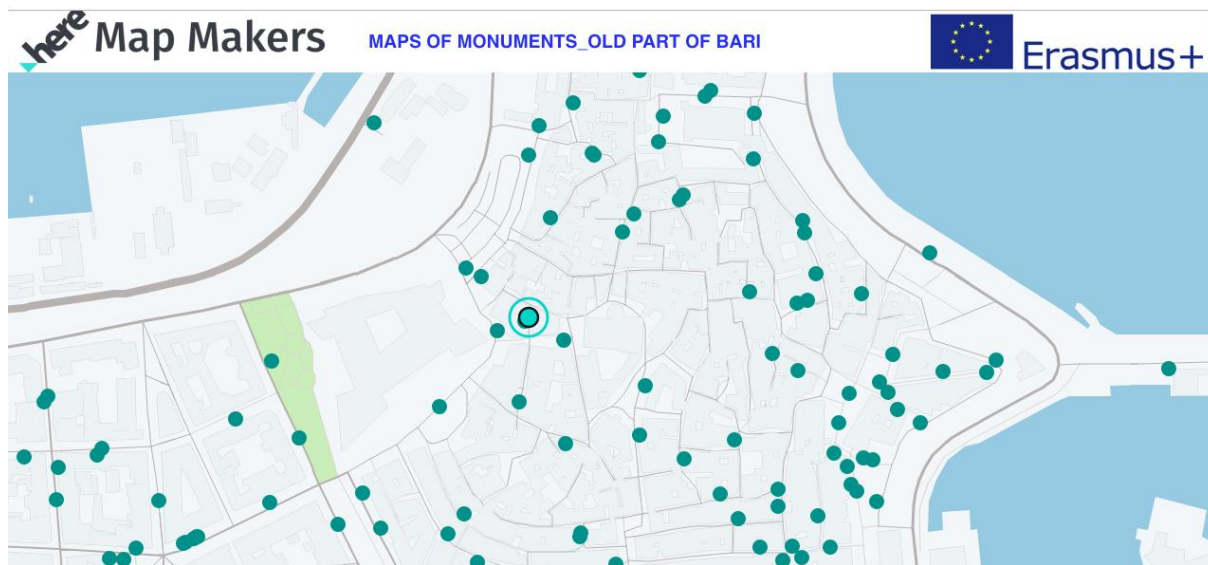



Vukova Poljska











Škola Liceo Scientifico e Linguistico „O. Tedone“ iz Italije izradila je digitalne karte spomenika u Bariju i Andriji:

[https://xyz.here.com/viewer/?project\\_id=f61f8bed-7085-4521-a261-5c91fcca1023](https://xyz.here.com/viewer/?project_id=f61f8bed-7085-4521-a261-5c91fcca1023)

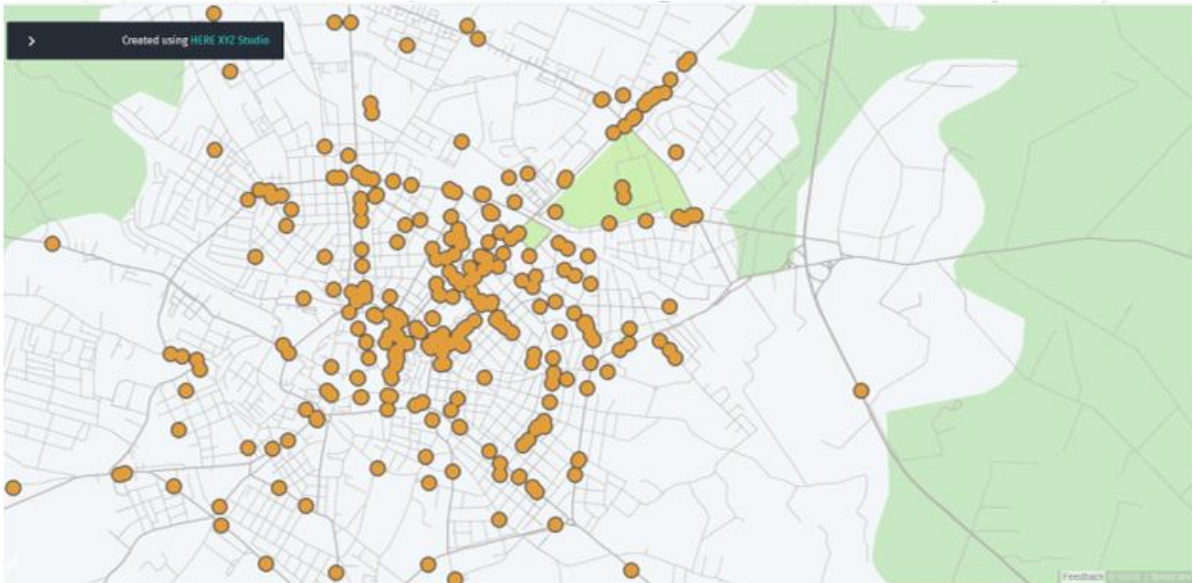


here Map Makers MAPS OF MONUMENTS\_OLD PART OF BARI  Erasmus+

 SREDNJA ŠKOLA IVANEČ  here  GEODETSKA ŠKOLA  SGGOŠ     Co-funded by the Erasmus+ Programme of the European Union

[https://xyz.here.com/viewer/?project\\_id=836d685d-cfcd-47a3-a3de-9467bac25b0f](https://xyz.here.com/viewer/?project_id=836d685d-cfcd-47a3-a3de-9467bac25b0f)

### Monuments in Andria town – Italy



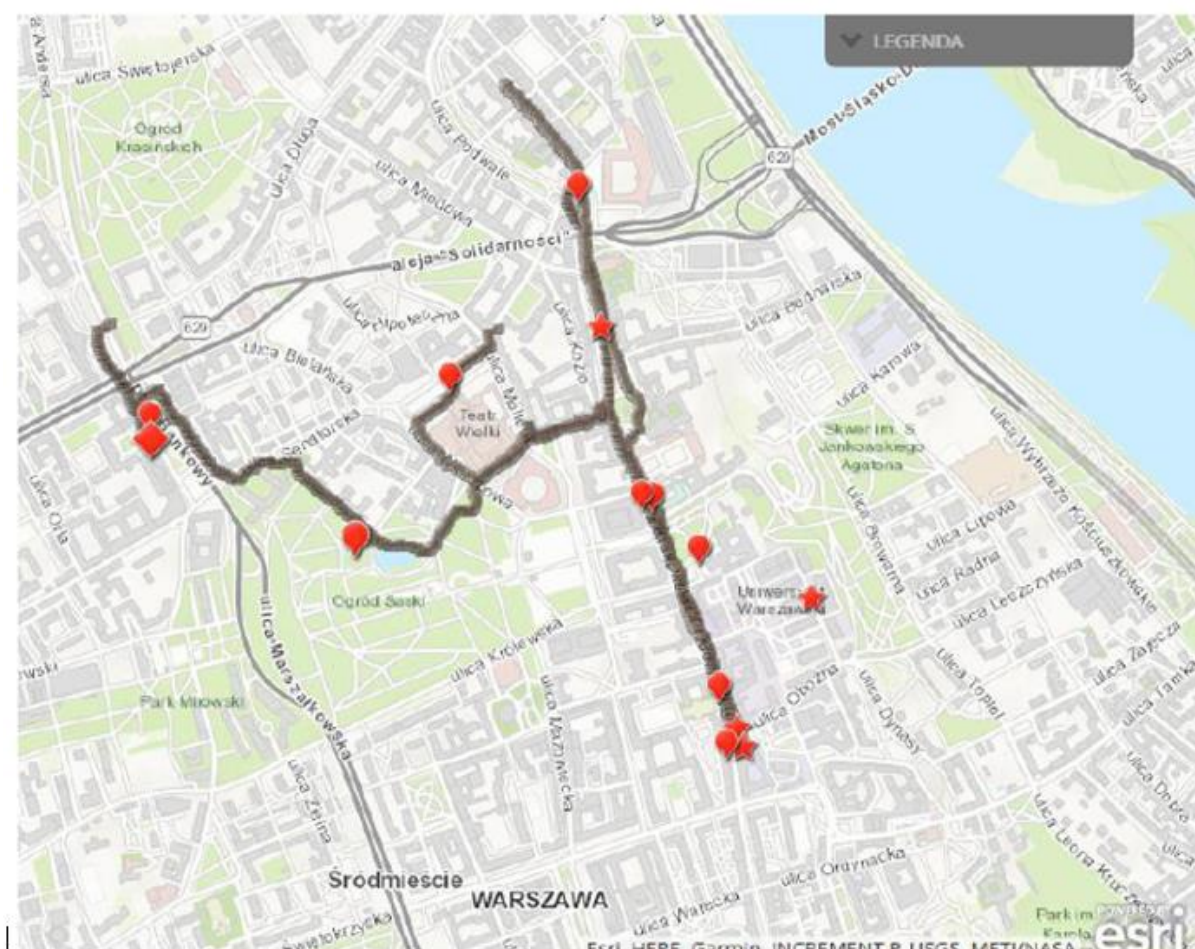
This publication [communication] reflects the views only of the author, and the Commission cannot be held responsible for any use which may be made of the information contained therein.



Škola Liceum Przymierza Rodzin iz Poljske izradila je karte povijesnog utjecaja 4 naroda u Varšavi:

<https://arcg.is/v8jeq>

### Italian route in Warsaw

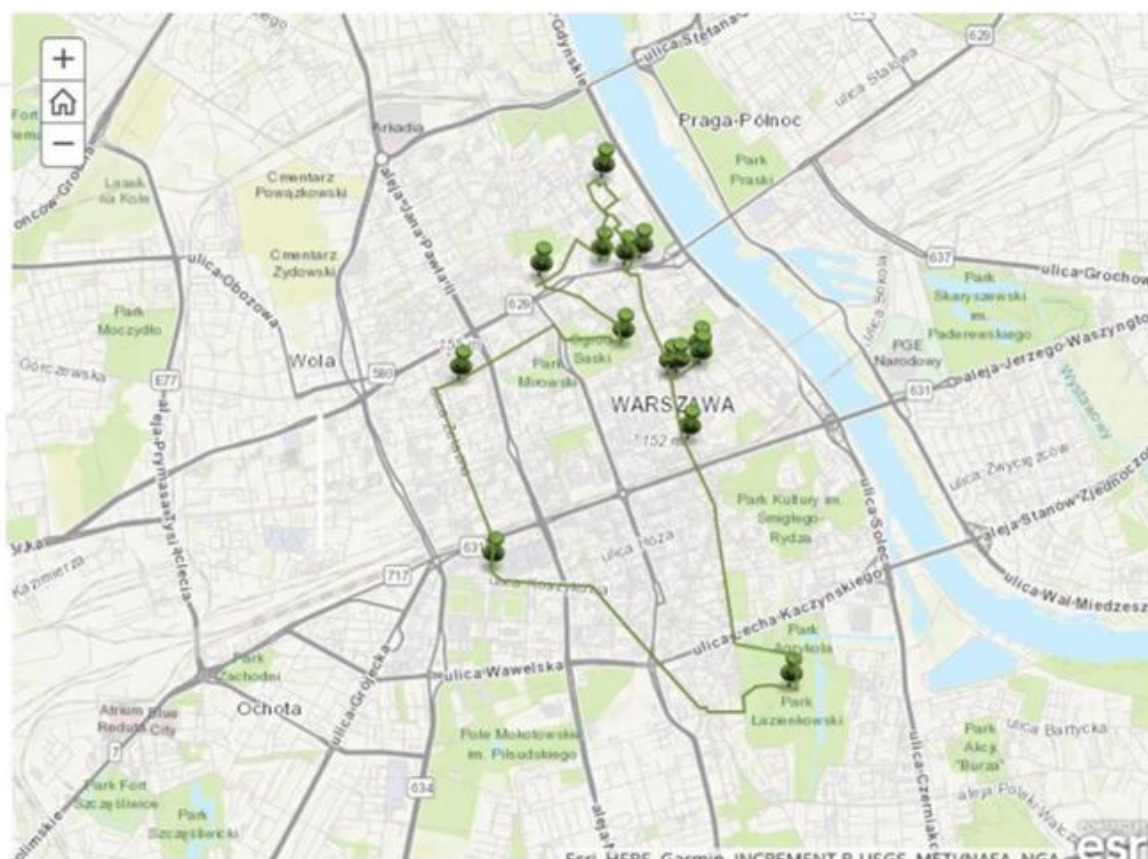


This material reflects the views only of the author, and the Commission cannot be held responsible for any use which may be made of the information contained therein.



<https://arcg.is/WzvVW>

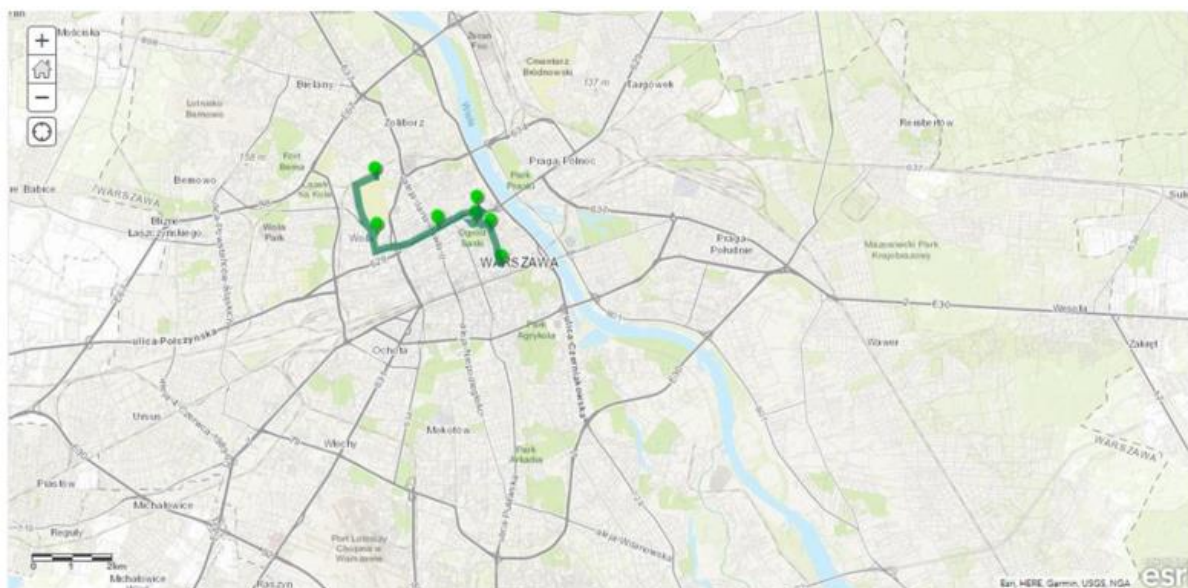
### French route in Warsaw



This material reflects the views only of the author, and the Commission cannot be held responsible for any use which may be made of the information contained therein.

<https://arcg.is/115HSa>

### Swiss route in Warsaw



This material reflects the views only of the author, and the Commission cannot be held responsible for any use which may be made of the information contained therein.

<https://arcg.is/10bmbu>

### English route in Warsaw



This material reflects the views only of the author, and the Commission cannot be held responsible for any use which may be made of the information contained therein.

Srednja gradbena, geodetska in okoljevarstvena škola iz Slovenije izradila je kartu pješačkih puteva na Ljubljanski stari grad:

<https://www.mapillary.com/app/?lat=46.048345620483516&lng=14.508267409641018&z=17&pKey=KHH2tXMrM0dfckfvk6rNbw>

### Walking tour to the Ljubljana Castle

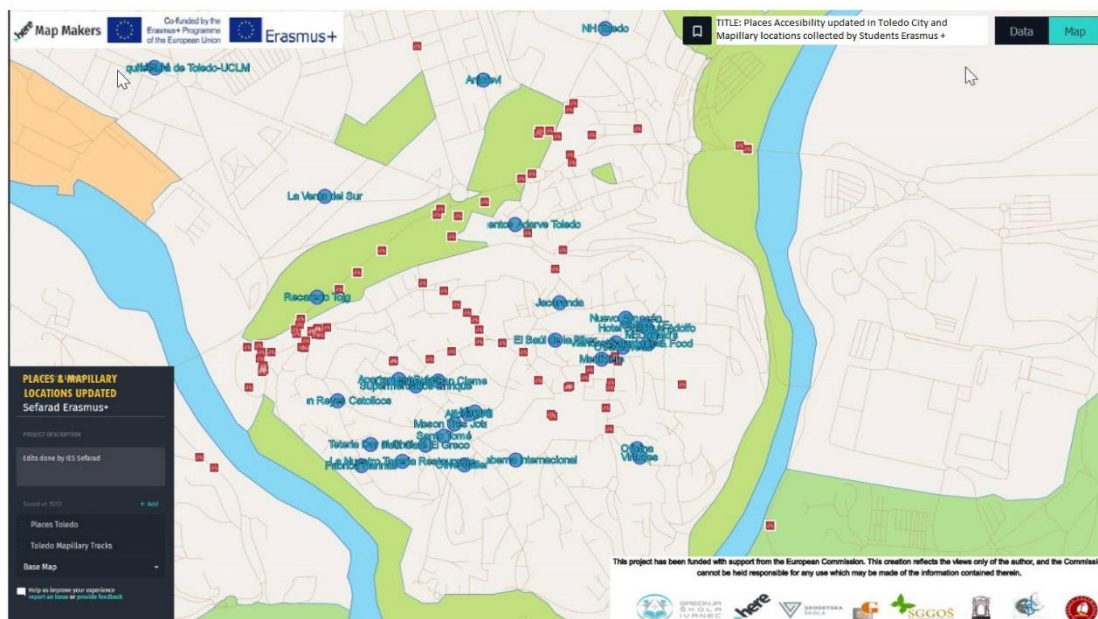


This material reflects the views only of the author, and the Commission cannot be held responsible for any use which may be made of the information contained therein.



Škola IES Sefarad iz Španjolske izradila je digitalnu kartu lokacija objekata sa pristupom osoba sa invaliditetom u Toledo:

[https://xyz.here.com/viewer/?project\\_id=91eacfad-175d-42b1-aacd-32d604ef775b](https://xyz.here.com/viewer/?project_id=91eacfad-175d-42b1-aacd-32d604ef775b)



This publication reflects the views only of the author, and the Commission cannot be held responsible for any use which may be made of the information contained therein.